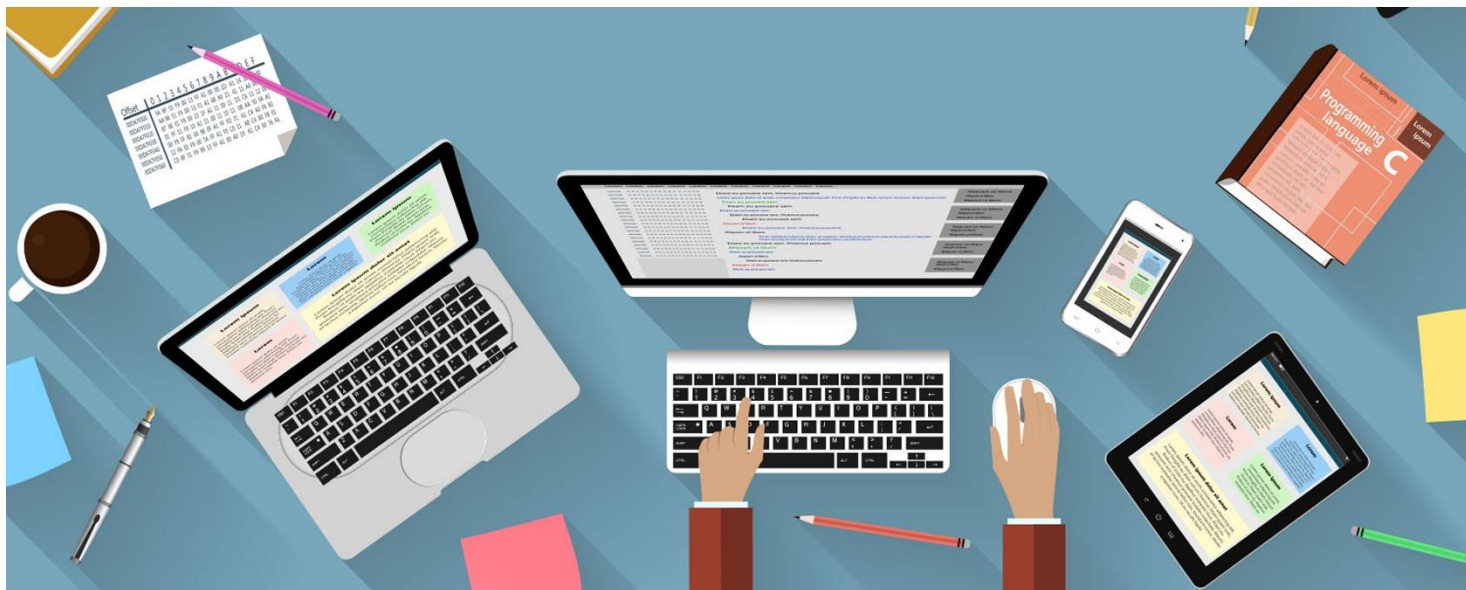




# 歐盟EF資料庫 基本流介紹



# 影片內容概要

資料庫-基本流網址:

[https://ecoinvent.lca-data.com/elementaryFlowList.xhtml?stock=EF2\\_0\\_Chemicals](https://ecoinvent.lca-data.com/elementaryFlowList.xhtml?stock=EF2_0_Chemicals)

## Elementary Flow data sets

entries: 41074 (41074 total) (page 1 of 411) <span>100 entries per page</span>			
名稱	類型	性質	單位
<a href="#">(+)-bornan-2-one</a>	Emissions / Emissions to water / Emissions to water, unspecified	Mass	kg
<a href="#">(+)-bornan-2-one</a>	Emissions / Emissions to soil / Emissions to soil, unspecified	Mass	kg
<a href="#">(+)-bornan-2-one</a>	Emissions / Emissions to soil / Emissions to non-agricultural soil	Mass	kg
<a href="#">(+)-bornan-2-one</a>	Emissions / Emissions to air / Emissions to air, unspecified (long-term)	Mass	kg
<a href="#">(+)-bornan-2-one</a>	Emissions / Emissions to water / Emissions to water, unspecified (long-term)	Mass	kg
<a href="#">(+)-bornan-2-one</a>	Emissions / Emissions to water / Emissions to sea water	Mass	kg
<a href="#">(+)-bornan-2-one</a>	Emissions / Emissions to air / Emissions to air, unspecified	Mass	kg
<a href="#">(+)-bornan-2-one</a>	Emissions / Emissions to water / Emissions to fresh water	Mass	kg
<a href="#">(+)-bornan-2-one</a>	Emissions / Emissions to air / Emissions to non-urban air or from high stacks	Mass	kg
<a href="#">(+)-bornan-2-one</a>	Emissions / Emissions to air / Emissions to urban air close to ground	Mass	kg
<a href="#">(+)-bornan-2-one</a>	Emissions / Emissions to soil / Emissions to agricultural soil	Mass	kg

根據ISO 14044的解釋，基本流是取自於環境且未先經人為轉換，而進入所探討的系統之物料或能源；或離開所探討的系統而棄置於環境，且未再經人為轉換之物料或能源。(取自ISO 14044, Q2019 第3.12)。

# 影片內容概要

## Elementary Flow data sets

entries: 41074 (41074 total) (page 1 of 411) ⏪ ⏩ 1 2 3 4 5 6 7 8 9 10 ⏭ ⏮ 100 entries per page

Name ^	Category ^	Reference Property ^	Reference Property Unit ^
<a href="#">(+)-bornan-2-one</a>	Emissions / Emissions to water / Emissions to water, unspecified	Mass	kg
<a href="#">(+)-bornan-2-one</a>	Emissions / Emissions to soil / Emissions to soil, unspecified	Mass	kg
<a href="#">(+)-bornan-2-one</a>	Emissions / Emissions to soil / Emissions to non-agricultural soil	Mass	kg
<a href="#">(+)-bornan-2-one</a>	Emissions / Emissions to air / Emissions to air, unspecified (long-term)	Mass	kg
<a href="#">(+)-bornan-2-one</a>	Emissions / Emissions to water / Emissions to water, unspecified (long-term)	Mass	kg
<a href="#">(+)-bornan-2-one</a>	Emissions / Emissions to water / Emissions to sea water	Mass	kg
<a href="#">(+)-bornan-2-one</a>	Emissions / Emissions to air / Emissions to air, unspecified	Mass	kg
<a href="#">(+)-bornan-2-one</a>	Emissions / Emissions to water / Emissions to fresh water	Mass	kg
<a href="#">(+)-bornan-2-one</a>	Emissions / Emissions to air / Emissions to non-urban air or from high stacks	Mass	kg
<a href="#">(+)-bornan-2-one</a>	Emissions / Emissions to air / Emissions to urban air close to ground	Mass	kg
<a href="#">(+)-bornan-2-one</a>	Emissions / Emissions to soil / Emissions to agricultural soil	Mass	kg

以菝-2-酮(bornan-2-one)為例

# 影片內容概要

ated byecoinvent for the EU Product Environmental (PEF) pilot phase implementation

s for PEF

## Elementary Flow data set overview page

Data set: (+)-bornan-2-one (03.00.003)

Processes with this flow as input / output

[View complete dataset](#)

[Download data set as XML file](#)

Type	Name	Reference Flow Property
<b>Elementary flow</b>	<b>(+)-bornan-2-one</b>	<b>Mass (kg)</b>
Categorization Emissions / Emissions to water / Emissions to water, unspecified	Synonyms (+)-2-Bornanone;(+)Camphor;(+)Camphor;(+)Camphor;(-)Alcanfor;(-)Camphor;(1R)(+)-amphor;(1R)Camphor;(1R, 4R)(+) Camphor;(1R,4R)-1,7,7-Trimethylbicyclo(2.2.1)heptan-2-one;(1R,4R)-1,7,7-trimethylnorbornan-2-one;(R)(+)Camphor;(R)Camphor;1,7,7-Trimethyl-bicyclo(2,2,1)Heptan-2-one;1,7,7-Trimethylbicyclo(2.2.1)-2-heptanone;1,7,7-Trimethylbicyclo(2.2.1)heptan-2-one;1,7,7-Trimethylbicyclo[2.2.1]-2-heptanone;1,7,7-Trimethylbicyclo[2.2.1]heptan-2-one;1,7,7-Trimethylnorcamphor;2-Bornanone;2-Camphanone;2-Kamfanon;2-Keto-1,7,7-trimethylnorcamphane;4,7,7-trimethylbicyclo[2.2.1]heptan-3-one;AC-5284;AC1L1DWH;AC1Q2CF0;AKOS000118728;Alcanfor;Alphanon;BB_NC-0198;Bicyclo(2.2.1)heptan-2-one, 1,7,7-trimethyl-;Bicyclo(2.2.1)heptan-2-one, 1,7,7-trimethyl-, (1R)-;Bicyclo(2.2.1)heptan-2-one, 1,7,7-trimethyl-, (1R,4R)-;Bicyclo(2.2.1)heptan-2-one, 1,7,7-trimethyl-, (1theta)-;Bicyclo(2.2.1)heptane-2-one, 1,7,7-trimethyl-;Bicyclo[2.2.1]heptan-2-one, 1,7,7-trimethyl-;Bicyclo[2.2.1]heptan-2-one, 1,7,7-trimethyl-, (+/-)-;Bicyclo[2.2.1]heptan-2-one, 1,7,7-trimethyl-, (1R)-;Bicyclo[2.2.1]heptan-2-one, 1,7,7-trimethyl-, (1S)-;Bornan-2-one;Bornane, 2-oxo-;CAMPHOR, (+)-;Camphor USP;Camphor, (+)-;Camphor, (+)-Isomer;Camphor, (+/-)-;Camphor, (1R)-Isomer;Camphor, (1R,4R)(+)-;Camphor, (1S)-Isomer;Camphor, D-;Camphor, synthetic;D(+)-Camphor;DL-Bornan-2-one;DL-Camphor;Formosa camphor;Gum camphor;Huile de camphre;I06-1217;JFD03998;Japan camphor;Japanese camphor;Kampfer;LMPR0102120001;Laurel camphor;Matricaria camphor;Mulberry roots;Norcamphor, 1,7,7-trimethyl-;Root bark oil;Root bark spirit;SMR000386909;Spirit of camphor;camphor;l(-)-Camphor;l-Camphor;nchembio862-comp3	
CAS Number 000464-49-3	EC number	Sum Formula
General comment Reference elementary flow of the International Reference Life Cycle Data System (ILCD).		

**類型(Type):** 基本流(Elementary Flow)

**名稱(Name):** 莖-2-酮(bornan-2-one)

**參考的基本流性質(Reference Flow Property):** 質量(公斤)

# 影片內容概要

ated byecoinvent for the EU Product Environmental (PEF) pilot phase implementation

s for PEF

## Elementary Flow data set overview page

Data set: (+)-bornan-2-one (03.00.003)

Processes with this flow as input / output

[View complete dataset](#)

[Download data set as XML file](#)

Type	Name	Reference Flow Property
Elementary flow	(+)-bornan-2-one	Mass (kg)
Categorization	Synonyms	
Emissions / Emissions to water / Emissions to water, unspecified	(+) -2-Bornanone; (+)-Camphor; (+)-Camphor; (+)-Camphor; (-)-Alcanfor; (-)-Camphor; (1R)-(+)-amphor; (1R)-Camphor; (1R, 4R)-(+)-Camphor; (1R,4R)-1,7,7-Trimethylbicyclo[2.2.1]heptan-2-one; (1R,4R)-1,7,7-trimethylbornan-2-one; (R)-(+)-Camphor; (R)-Camphor; 1,7,7-Trimethyl-bicyclo[2.2.1]Heptan-2-one; 1,7,7-Trimethylbicyclo[2.2.1]-2-heptanone; 1,7,7-Trimethylbicyclo[2.2.1]heptan-2-one; 1,7,7-Trimethylbicyclo[2.2.1]heptan-2-one; 1,7,7-Trimethylbornanone; 2-Bornanone; 2-Camphanone; 2-Kamfanon; 2-Keto-1,7,7-trimethylbornanone; 4,7,7-trimethylbicyclo[2.2.1]heptan-3-one; AC-5284; AC1L1DWH; AC1Q2CF0; AKOS000118728; Alcanfor; Alphanon; BB_NC-0198; Bicyclo[2.2.1]heptan-2-one, 1,7,7-trimethyl-; Bicyclo[2.2.1]heptan-2-one, 1,7,7-trimethyl-, (1R)-; Bicyclo[2.2.1]heptan-2-one, 1,7,7-trimethyl-, (1R,4R)-; Bicyclo[2.2.1]heptan-2-one, 1,7,7-trimethyl-, (1theta)-; Bicyclo[2.2.1]heptane-2-one, 1,7,7-trimethyl-; Bicyclo[2.2.1]heptan-2-one, 1,7,7-trimethyl-; Bicyclo[2.2.1]heptan-2-one, 1,7,7-trimethyl-, (+/-)-; Bicyclo[2.2.1]heptan-2-one, 1,7,7-trimethyl-, (1R)-; Bicyclo[2.2.1]heptan-2-one, 1,7,7-trimethyl-, (1S)-; Bornan-2-one; Bornane, 2-oxo-; CAMPHOR, (+)-; Camphor USP; Camphor, (+)-; Camphor, (+)-Isomer; Camphor, (+/-)-; Camphor, (1R)-Isomer; Camphor, (1R,4R)-(+)-; Camphor, (1S)-Isomer; Camphor, D-; Camphor, synthetic; D-(+)-Camphor; DL-Bornan-2-one; DL-Camphor; Formosa camphor; Gum camphor; Huile de camphre; I06-1217; JFD03998; Japan camphor; Japanese camphor; Kampfer; LMPR0102120001; Laurel camphor; Matricaria camphor; Mulberry roots; Norcamphor, 1,7,7-trimethyl-; Root bark oil; Root bark spirit; SMR000386909; Spirit of camphor; camphor; l(-)-Camphor; l-Camphor; nchembio862-comp3	
CAS Number	EC number	Sum Formula
000464-49-3		
General comment Reference elementary flow of the International Reference Life Cycle Data System (ILCD).		

**類別(Category):** 排放/排放至水體/非特定

**同義詞(Synonyms):** 相同或類似的物質但具有不同的名稱或代稱。可以透過同義詞來搜尋與此基本流吻合的名稱或名詞

# 影片內容概要

ated byecoinvent for the EU Product Environmental (PEF) pilot phase implementation

s for PEF

## Elementary Flow data set overview page

Data set: (+)-bornan-2-one (03.00.003)

Type	Name	Reference Flow Property
Elementary flow	(+)-bornan-2-one	Mass (kg)
Categorization	Synonyms	
Emissions / Emissions to water / Emissions to water, unspecified	(+) -2-Bornanone; (+)-Camphor; (+)-Camphor; (+)-Camphor; (-)-Alcanfor; (-)-Camphor; (1R)-(+)-amphor; (1R)-Camphor; (1R, 4R)-(+)-Camphor; (1R,4R)-1,7,7-Trimethylbicyclo(2.2.1)heptan-2-one; (1R,4R)-1,7,7-trimethylnorbornan-2-one; (R)-(+)-Camphor; (R)-Camphor; 1,7,7-Trimethyl-bicyclo(2,2,1)Heptan-2-one; 1,7,7-Trimethylbicyclo(2.2.1)-2-heptanone; 1,7,7-Trimethylbicyclo(2.2.1)heptan-2-one; 1,7,7-Trimethylbicyclo[2.2.1]heptan-2-one; 1,7,7-Trimethylbicyclo[2.2.1]heptan-3-one; AC-5284; AC1L1DWH; AC1Q2CF0; AKOS000118728; Alcanfor; Alphanon; BB_NC-0198; Bicyclo(2.2.1)heptan-2-one, 1,7,7-trimethyl-; Bicyclo(2.2.1)heptan-2-one, 1,7,7-trimethyl-, (1R)-; Bicyclo(2.2.1)heptan-2-one, 1,7,7-trimethyl-, (1R,4R)-; Bicyclo(2.2.1)heptan-2-one, 1,7,7-trimethyl-, (1theta)-; Bicyclo(2.2.1)heptane-2-one, 1,7,7-trimethyl-; Bicyclo[2.2.1]heptan-2-one, 1,7,7-trimethyl-; Bicyclo[2.2.1]heptan-2-one, 1,7,7-trimethyl-, (+/-)-; Bicyclo[2.2.1]heptan-2-one, 1,7,7-trimethyl-, (1R)-; Bicyclo[2.2.1]heptan-2-one, 1,7,7-trimethyl-, (1S)-; Bornan-2-one; Bornane, 2-oxo-; CAMPHOR, (+)-; Camphor USP; Camphor, (+)-; Camphor, (+)-Isomer; Camphor, (+/-)-; Camphor, (1R)-Isomer; Camphor, (1R,4R)-(+)-; Camphor, (1S)-Isomer; Camphor, D-; Camphor, synthetic; D-(+)-Camphor; DL-Bornan-2-one; DL-Camphor; Formosa camphor; Gum camphor; Huile de camphre; I06-1217; JFD03998; Japan camphor; Japanese camphor; Kampfer; LMPR0102120001; Laurel camphor; Matricaria camphor; Mulberry roots; Norcamphor, 1,7,7-trimethyl-; Root bark oil; Root bark spirit; SMR000386909; Spirit of camphor; camphor; l(-)-Camphor; l-Camphor; nchembio862-comp3	
CAS Number	EC number	Sum Formula
000464-49-3		
General comment Reference elementary flow of the International Reference Life Cycle Data System (ILCD).		

**CAS編號(CAS Number):** 為一種編碼分類，可在化學資料庫以此編號檢索相關資訊。

**EC編碼(EC Number):** 以分類酶為主的編碼分類，以催化的化學反應為分類基礎。

**公式(Sum Formula):** 無相關資訊

**評論(General Comment):** 參考國際生命週期數據系統 (ILCD) 的基本流程。

# 影片內容概要

ated by ecoinvent for the EU Product Environmental (PEF) pilot phase implementation

s for PEF

## Elementary Flow data set overview page

Data set: (+)-bornan-2-one (03.00.003)

Type	Name	Reference Flow Property
Elementary flow	(+)-bornan-2-one	Mass (kg)
Categorization / Emissions / Emissions to water / Emissions to water, unspecified	Synonyms (+)-2-Bornanone;(+)-Camphor;(+-)-Camphor;(+-)-Camphor;(-)-Alcanfor;(-)-Camphor;(1R)-(+)-amphor;(1R)-Camphor;(1R, 4R)-(+)-Camphor;(1R,4R)-1,7,7-Trimethylbicyclo(2.2.1)heptan-2-one;(1R,4R)-1,7,7-trimethylnorbornan-2-one;(R)-(+)-Camphor;(R)-Camphor;1,7,7-Trimethyl-bicyclo(2,2,1)Heptan-2-one;1,7,7-Trimethylbicyclo(2.2.1)-2-heptanone;1,7,7-Trimethylbicyclo(2.2.1)heptan-2-one;1,7,7-Trimethylbicyclo[2.2.1]-2-heptanone;1,7,7-Trimethylbicyclo[2.2.1]heptan-2-one;1,7,7-Trimethylnorcamphor;2-Bornanone;2-Camphanone;2-Kamfanon;2-Keto-1,7,7-trimethylnorcamphane;4,7,7-trimethylbicyclo[2.2.1]heptan-3-one;AC-5284;AC1L1DWH;AC1Q2CF0;AKOS000118728;Alcanfor;Alphanon;BB_NC-0198;Bicyclo(2.2.1)heptan-2-one, 1,7,7-trimethyl-;Bicyclo(2.2.1)heptan-2-one, 1,7,7-trimethyl-, (1R)-;Bicyclo(2.2.1)heptan-2-one, 1,7,7-trimethyl-, (1R,4R)-;Bicyclo(2.2.1)heptan-2-one, 1,7,7-trimethyl-, (1theta)-;Bicyclo(2.2.1)heptane-2-one, 1,7,7-trimethyl-;Bicyclo[2.2.1]heptan-2-one, 1,7,7-trimethyl-;Bicyclo[2.2.1]heptan-2-one, 1,7,7-trimethyl-, (+/-)-;Bicyclo[2.2.1]heptan-2-one, 1,7,7-trimethyl-, (1R)-;Bicyclo[2.2.1]heptan-2-one, 1,7,7-trimethyl-, (1S)-;Bornan-2-one;Bornane, 2-oxo-;CAMPHOR, (+-)-;Camphor USP;Camphor, (+)-;Camphor, (+)-Isomer;Camphor, (+/-)-;Camphor, (1R)-Isomer;Camphor, (1R,4R)-(+)-;Camphor, (1S)-Isomer;Camphor, D-;Camphor, synthetic;D-(+)-Camphor;DL-Bornan-2-one;DL-Camphor;Formosa camphor;Gum camphor;Huile de camphre;I06-1217;JFD03998;Japan camphor;Japanese camphor;Kampfer;LMPR0102120001;Laurel camphor;Matricaria camphor;Mulberry roots;Norcamphor, 1,7,7-trimethyl-;Root bark oil;Root bark spirit;SMR000386909;Spirit of camphor;camphor;l(-)-Camphor;l-Camphor;nchembio862-comp3	
CAS Number 000464-49-3	EC number	Sum Formula
General comment Reference elementary flow of the International Reference Life Cycle Data System (ILCD).		

點入“完整數據集”

# 影片內容概要

## Elementary Flow Data set: (+)-bornan-2-one (en)

- ▶ Flow information
- ▶ Modelling and validation
- ▶ Administrative information
- ▶ Flow **Properties**

四個列表分別為：

1. 基本流的資訊(Flow information)
2. 建立模型與驗證相關資訊(Modelling and validation)
3. 行政相關資訊(Administrative information)
4. 流性質(Flow Properties)



# 影片內容概要

## 建立模型與驗證相關資訊(Modelling and validation)

▼ Flow information	
<b>Data set information</b>	
Name	(+)-bornan-2-one
Synonyms	(+)-2-Bornanone;(+)Camphor;(+)Camphor;(+)Camphor;(-)Alcanfor;(-)Camphor;(1R)(+)amphor;(1R)Camphor;(1R, 4R)(+) Camphor;(1R,4R)-1,7,7-Trimethylbicyclo(2.2.1)heptan-2-one;(1R,4R)-1,7,7-trimethylbornan-2-one;(R)(+)Camphor;(R)Camphor;1,7,7-Trimethyl-bicyclo(2,2,1)Heptan-2-one;1,7,7-Trimethylbicyclo(2.2.1)-2-heptanone;1,7,7-Trimethylbicyclo(2.2.1)heptan-2-one;1,7,7-Trimethylbicyclo[2.2.1]-2-heptanone;1,7,7-Trimethylbicyclo[2.2.1]heptan-2-one;1,7,7-Trimethylbornanone;2-Bornanone;2-Camphanone;2-Kamfanon;2-Keto-1,7,7-trimethylbornanone;4,7,7-trimethylbicyclo[2.2.1]heptan-3-one;AC-5284;AC1L1DWH;AC1Q2CF0;AKOS000118728;Alcanfor;Alphanon;BB_NC-0198;Bicyclo(2.2.1)heptan-2-one, 1,7,7-trimethyl-, Bicyclo(2.2.1)heptan-2-one, 1,7,7-trimethyl-, (1R)-;Bicyclo(2.2.1)heptan-2-one, 1,7,7-trimethyl-, (1R,4R)-;Bicyclo(2.2.1)heptan-2-one, 1,7,7-trimethyl-, (1theta)-;Bicyclo(2.2.1)heptane-2-one, 1,7,7-trimethyl-, Bicyclo[2.2.1]heptan-2-one, 1,7,7-trimethyl-, Bicyclo[2.2.1]heptan-2-one, 1,7,7-trimethyl-, (+/-)-;Bicyclo[2.2.1]heptan-2-one, 1,7,7-trimethyl-, (1R)-;Bicyclo[2.2.1]heptan-2-one, 1,7,7-trimethyl-, (1S)-;Bornan-2-one;Bornane, 2-oxo-;CAMPHOR, (+-);Camphor USP;Camphor, (+-);Camphor, (+)-Isomer;Camphor, (+/-)-;Camphor, (1R)-Isomer;Camphor, (1R,4R)-(+);Camphor, (1S)-Isomer;Camphor, D-;Camphor, synthetic;D-(+)-Camphor;DL-Bornan-2-one;DL-Camphor;Formosa camphor;Gum camphor;Huile de camphre;I06-1217;JFD03998;Japan camphor;Japanese camphor;Kampfer;LMPR0102120001;Laurel camphor;Matricaria camphor;Mulberry roots;Norcamphor, 1,7,7-trimethyl-;Root bark oil;Root bark spirit;SMR000386909;Spirit of camphor;camphor;l(-)-Camphor;l-Camphor;nchembio862-comp3
Classification	Class name : Hierarchy level ILCD: Emissions / Emissions to water / Emissions to water, unspecified
CAS Number	000464-49-3
General comment	Reference elementary flow of the International Reference Life Cycle Data System (ILCD).
<b>Quantitative reference</b>	
Reference Flow Property	Mass (kg)

**名稱(Name):** 莖-2-酮(bornan-2-one)

**同義詞(Synonyms):** 相同或類似的物質但具有不同的名稱或代稱。

**特徵(Classification):** 排放/排放至水體/非特定

**CAS編碼(CAS Number):** 為一種編碼分類，可在化學資料庫以此編號檢索相關資訊。

**評論(General Comment):** 參考國際生命週期數據系統 ( ILCD ) 的基本流。

**量化參考(Quantitative reference)**

**參考基本流的性質(Reference Flow Property):** 質量(公斤)

# 影片內容概要

## 基本流的資訊(Flow information)

### ▼ Modelling and validation

#### LCI method

Type of flow: Elementary flow

#### Compliance Declarations

Compliance	Compliance system name ILCD Data Network - compliance (non-Process)	Approval of overall compliance <i>Fully compliant</i>
------------	--	--

### LCI方法(LCI method)

流的類型(Type of flow): 基本流

符合性宣告(Compliance Declarations)

符合的系統名稱(Compliance system name): ILCD數據-符合(非流程)

整體規範的批准(Approval of overall compliance): 皆符合

# 影片內容概要

## 行政相關資訊(Administrative information)

▼ Administrative information	
<b>Data entry by</b>	
Time stamp (last saved)	2012-01-12T15:51:49.427+01:00
Data set format(s)	<a href="#">ILCD format</a>
<b>Publication and ownership</b>	
UUID	ef524b0a-0c68-41ab-a091-eadd1b5574e1
Data set version	03.00.003
Permanent data set URI	<a href="http://lca.jrc.ec.europa.eu/lcainfohub/datasets/ilcd/flows/ef524b0a-0c68-41ab-a091-eadd1b5574e1.xml">http://lca.jrc.ec.europa.eu/lcainfohub/datasets/ilcd/flows/ef524b0a-0c68-41ab-a091-eadd1b5574e1.xml</a>

### 數據輸入(Data entry by)

時間戳記-最近更新時間(Time stamp-last saved): 2012-01-12

數據集格式(Data set format): ILCD格式

### 出版及所有權(Publication and ownership)

UUID: ef524b0a-0c68-41ab-a091-eadd1b5574e1

資料庫版本(Data set version): 03.00.003

數據集之永久網址(Permanent data set URI):

<http://lca.jrc.ec.europa.eu/lcainfohub/datasets/ilcd/flows/ef524b0a-0c68-41ab-a091-eadd1b5574e1.xml>(目前無法連結)

# 影片內容概要

## 流性質(Flow Properties)

Flow Property	Mean value	Minimum value	Maximum value	Uncertainty distribution type	Relative StdDev in %	Data derivation type / status	General comment
Mass	1.0	0.0	0.0		0.0 %		

可以查看基本流的性質，由資訊得知以質量為性質作為此基本流的建立。

**流性質(Flow property)**

**平均值(Mean value)**

**最小值(Minimum value)**

**最大值(Maximum value)**

**不確定性分布類型(Uncertainty distribution type)**

**相關性(Relative StdDev In %)**

**數據建立類型(Data derivation type/ status)**

**相關資訊(General comment)**