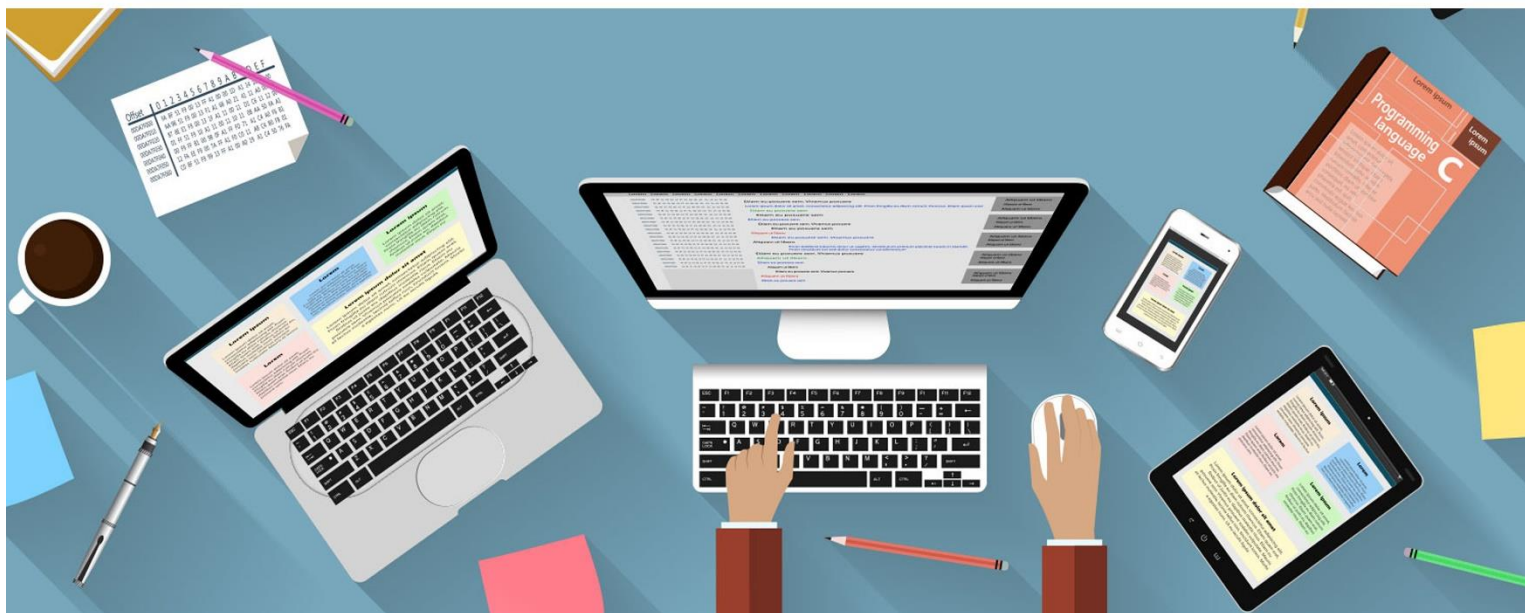




歐盟EF資料庫

如何註冊/登入資料庫?

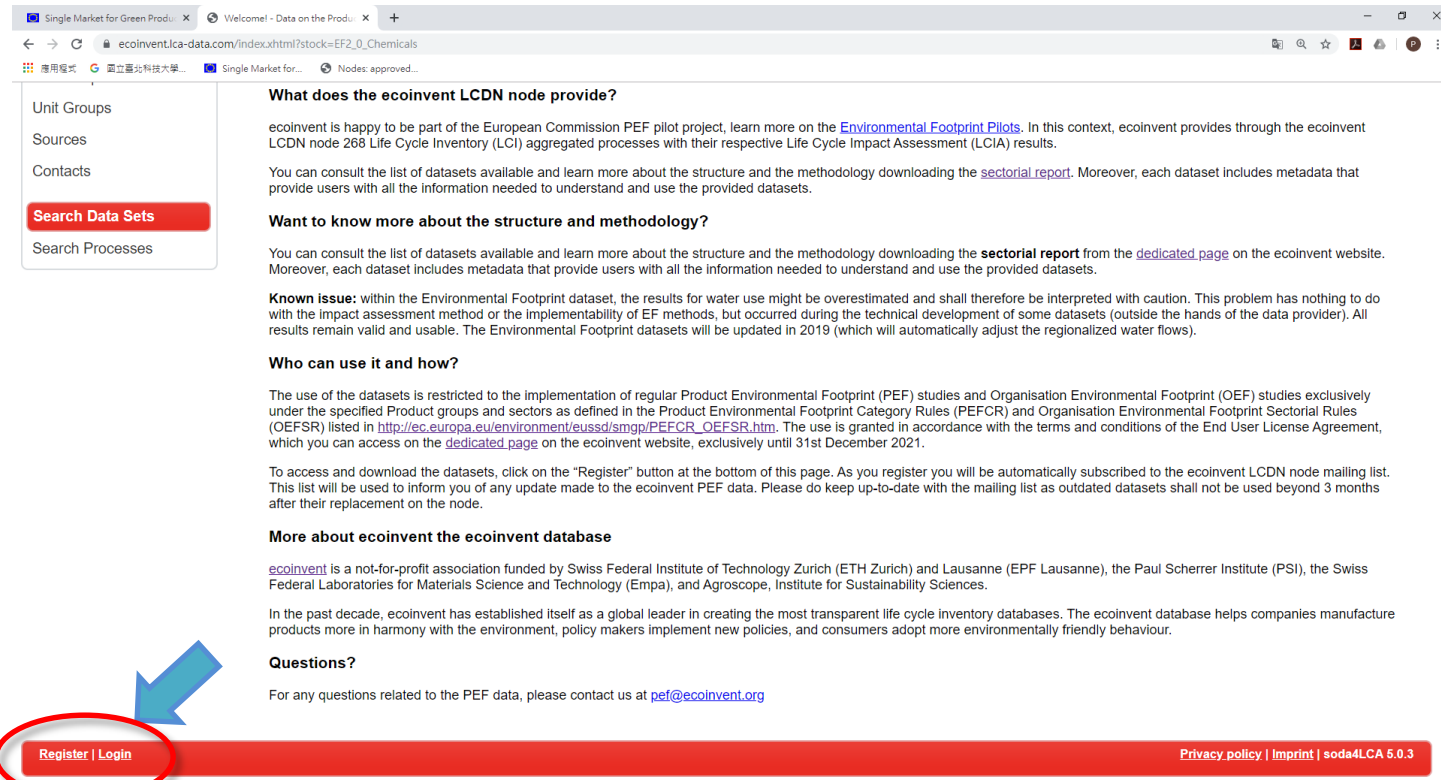


如何註冊資料庫帳號密碼?

影片內容概要

資料庫-註冊網址:

https://ecoinvent.lca-data.com/registration.xhtml?stock=EF2_0_Chemicals



以Chemical1資料庫為例，在頁面的左下角有註冊/登入(Register/Login)未註冊的使用者請點選註冊(Register)

影片內容概要

註冊介面如下

ecoinvent Data on the Production of Chemicals
created by ecoinvent for the EU Product Environmental (PEF) pilot phase implementation
Data stock: Chemicals for PEF

Home
Browse Data Sets
Processes
LCIA Methods
Elementary Flows
Product Flows
Flow Properties
Unit Groups
Sources
Contacts
Search Data Sets
Search Processes

User registration form

Login information

Login name: * E-mail: *

Personal information

Title: First name: Last name:

Gender: ☐ Female ☐ Male ☐ Other

Professional Position:

Work institution:

Phone number:

Comments

For what purpose do you plan to use the datasets?:

共有四個部分需要輸入資料分別為：

- 帳號資訊(Login information)
- 個人資訊(Personal information)
- 使用資料庫的目的(Comments)
- 地址資訊(Address information)

註冊與建立資料庫帳號密碼

影片內容概要

帳號資訊(Login information)

Login information

Login name: *

E-mail: *

帳號(Login name): 請輸入註冊帳號
Email: 請輸入電子郵件帳號

影片內容概要

個人資訊(Personal information)

Personal information

稱謂

名

姓

性別

☐ Female

☐ Male

☐ Other

職稱

工作機構

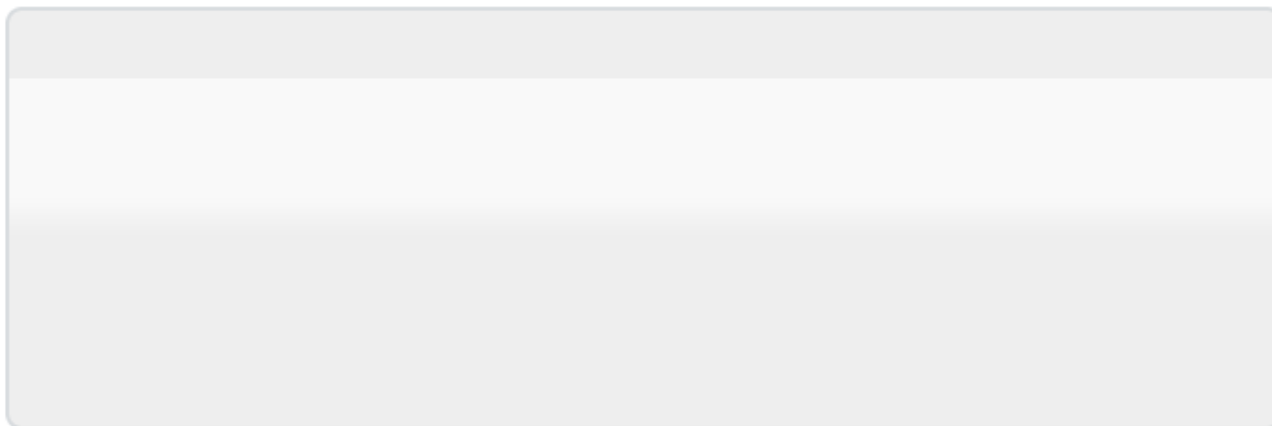
手機號碼

影片內容概要

使用資料庫的目的(Comments)

Comments

For what purpose do you plan to use the datasets?:



請大致回答使用的目的即可，例如:學術研究用途、查詢相關資訊...等

影片內容概要

地址資訊(Address information)

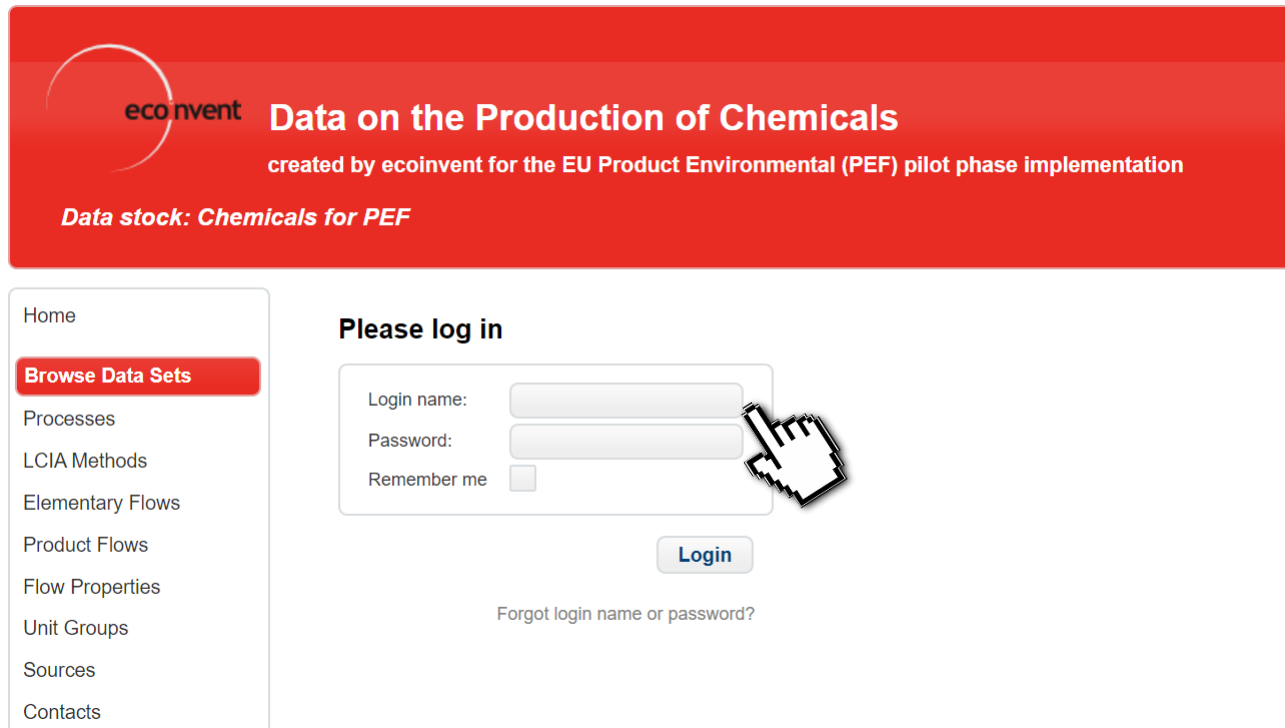
The image shows a web form titled "Address information" with a red header. The form contains several input fields, each with a Chinese label in a blue-bordered box pointing to it:

- 國家** (Country): Points to a dropdown menu currently showing "Please select" with a red arrow.
- 郵遞區號** (Postal code): Points to a text input field.
- 居住城市** (Residence city): Points to a text input field.
- 詳細地址** (Detailed address): Points to a large text area for the full address.

地址資訊可以利用中華郵政之“中文地址英譯”較為準確。

連結: <https://www.post.gov.tw/post/internet/Postal/index.jsp?ID=207>

影片內容概要



The screenshot shows the login page of the ecoinvent Data on the Production of Chemicals website. The header is red with the ecoinvent logo and the title "Data on the Production of Chemicals". Below the title, it says "created by ecoinvent for the EU Product Environmental (PEF) pilot phase implementation" and "Data stock: Chemicals for PEF". On the left, there is a sidebar with a list of links: Home, Browse Data Sets (highlighted in red), Processes, LCIA Methods, Elementary Flows, Product Flows, Flow Properties, Unit Groups, Sources, and Contacts. The main content area has a "Please log in" heading and a login form with fields for "Login name:", "Password:", and a "Remember me" checkbox. A cursor is pointing at the password field. Below the form is a "Login" button and a link for "Forgot login name or password?".

ecoinvent **Data on the Production of Chemicals**
created by ecoinvent for the EU Product Environmental (PEF) pilot phase implementation
Data stock: Chemicals for PEF

Home
Browse Data Sets
Processes
LCIA Methods
Elementary Flows
Product Flows
Flow Properties
Unit Groups
Sources
Contacts

Please log in

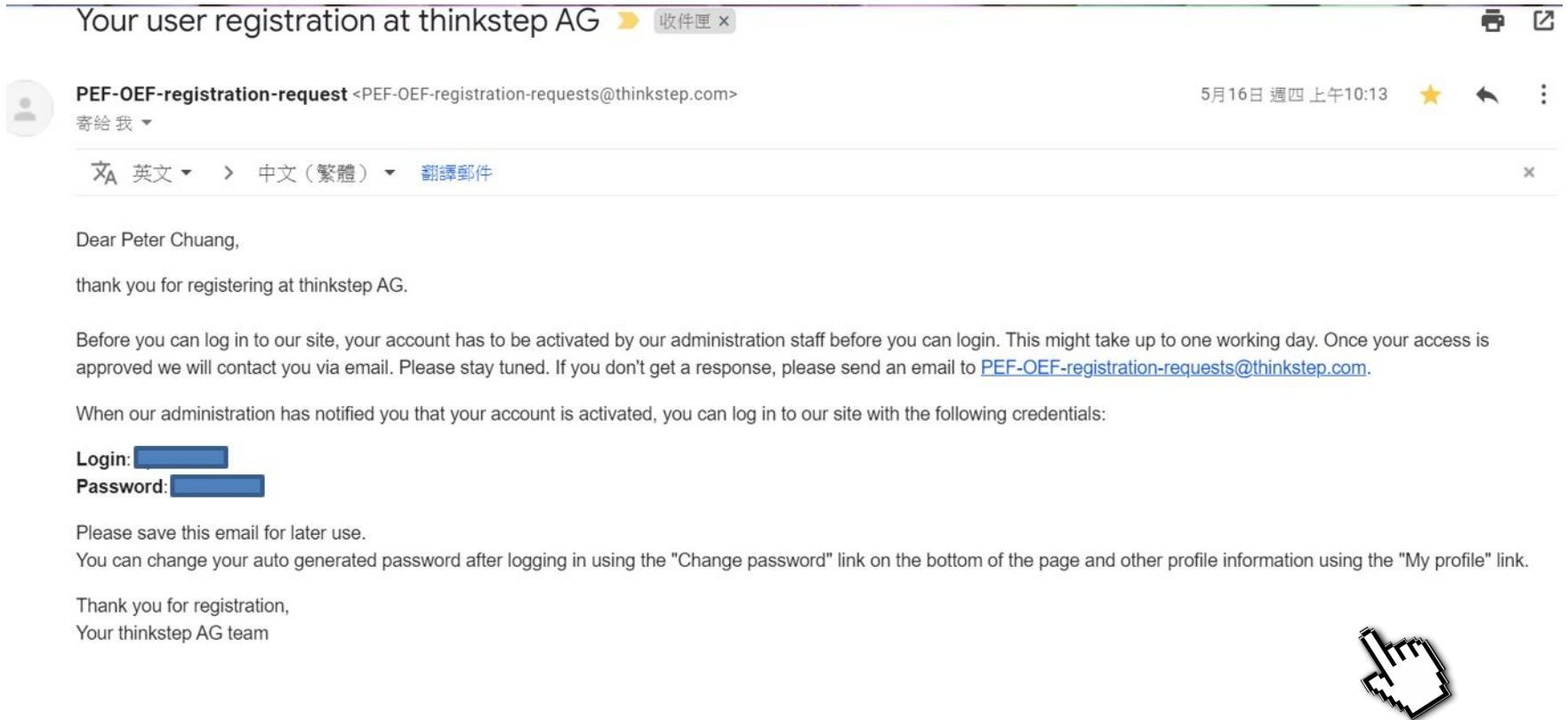
Login name:
Password:
Remember me ☐

Login

[Forgot login name or password?](#)

當輸入完所有註冊流程後，即可直接使用資料庫(本資料庫)。

影片內容概要



部分資料庫會以電子郵件寄送通知給註冊用戶，以收到電子郵件為準。
如圖所示，官方將會寄出帳號確認信已確認您資料庫的註冊狀態。

影片內容概要

Quantis node for PEF data

Data stock: EF-Compliant data 2.0

Home

Browse Data Sets

Processes

LCIA Methods

Elementary Flows

Product Flows

Flow Properties

Unit Groups

Sources

Contacts

Search Data Sets

Search Processes

Welcome!

Welcome to the Quantis PEF/OEF node landing page!

You need access to the Product Environmental Footprint (PEF) data?

Contact us! PEF-OEF-requests@quantis-intl.com

About the official PEF/OEF data on this ILCD node

Quantis provides a EF-compliant datasets for free use by companies that implement official Product and Organisation Environmental Footprint (PEF/OEF) studies under any of the PEFCRs or OEFSRs piloted under the Single Market for Green Products initiative by the European Commission (<http://ec.europa.eu/environment/eussd/smgq/index.htm>). This free use of these mandatory datasets is granted for this specific purpose by the European Commission.

The LCI datasets can be used by any person or entity for implementing and using Product Environmental Footprint (PEF) studies and Organisation Environmental Footprint (OEF) studies exclusively under the aforementioned 26 PEFCRs/OEFSRs and in accordance with the terms and conditions of the revised End User License Agreement (EULA) provided with each dataset ([Food and Agriculture](#) and [Other processes](#)). The granting of rights is valid until 31 December 2024, free of any charge.

For obtaining access to the node, please send an inquiry to PEF-OEF-requests@quantis-intl.com and we will send you a username and password to login.

Note: Within the Environmental Footprint dataset, the results for water use might be overestimated and shall therefore be interpreted with caution. This problem has nothing to do with the impact assessment method or the implementability of EF methods, but occurred during the technical development of some datasets. All results remains valid and usable. The Environmental Footprint datasets will be updated in 2019 (which will automatically adjust the regionalized water flows).

I UPDATE ! The following three datasets were updated on 28 October 2019 (v1.14.002) after identification of an error affecting the Water use (water scarcity) impact category:

- Swine; for slaughter; at farm; per kg live weight, EU-28+3 (UUID: 30a38945-9e9a-42a2-9217-46bae1349da3)
- Swine; for slaughter; at farm; per kg live weight, ES (UUID: d818afac-ee5d-4a32-b87e-46420710d3df)
- Swine; for slaughter; at farm; per kg live weight, DE (UUID: fb343ae9-b7e6-4321-b757-e2bfd93fe03)

About Quantis

Quantis guides top organizations to define, shape and implement intelligent environmental sustainability solutions. In a nutshell, our creative geeks take the latest science and make it actionable. Our team of talents delivers resilient strategies, robust metrics, useful tools, and credible communications for a more sustainable future.

A sustainability consulting group known for our metrics-based approach to sustainability, Quantis has offices in the US, France, Switzerland, Germany, Italy and Colombia and has a diverse client portfolio that spans the globe, including Barry Callebaut, BASF, Bel Group, Braskem, Danone, Del Monte Foods, the European Commission, Farmer Brothers, GE, General Mills, IKEA, Intel, The Kellogg Company, Kering, the Kraft Heinz Company, L'Oréal, LVMH, Mars, Mondelez International, Nestlé, Olam, PepsiCo, Pirelli, Starbucks, Unilever, Veolia and more.

(re)discover Quantis at www.quantis-intl.com

其中農業食品和其他數據集（Quantis節點）資料庫不提供註冊功能，要向管理單位 PEF-OEF-requests@quantis-intl.com 發信請求開通帳號密碼而農產品資料庫(Node of Quantis)使用公共帳戶，帳號密碼如下：

帳號:Public

密碼: PEFData_2018-2020